

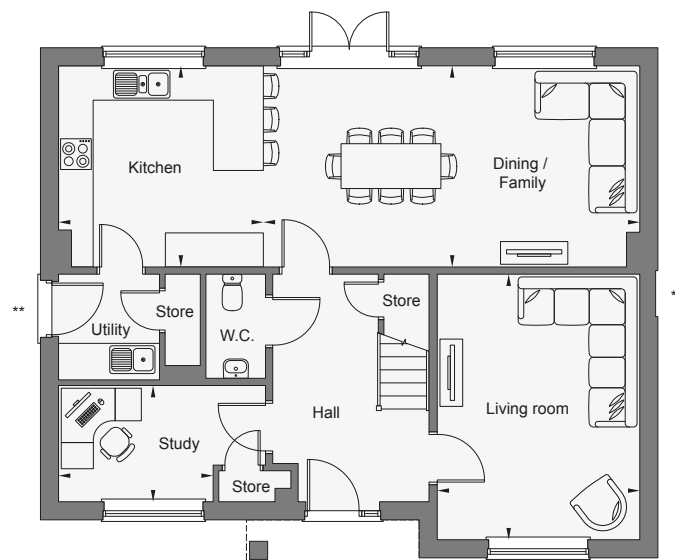
THE KINGSTON

THE MEADOWS, Wymeswold

Version 1 – 30th June 2022

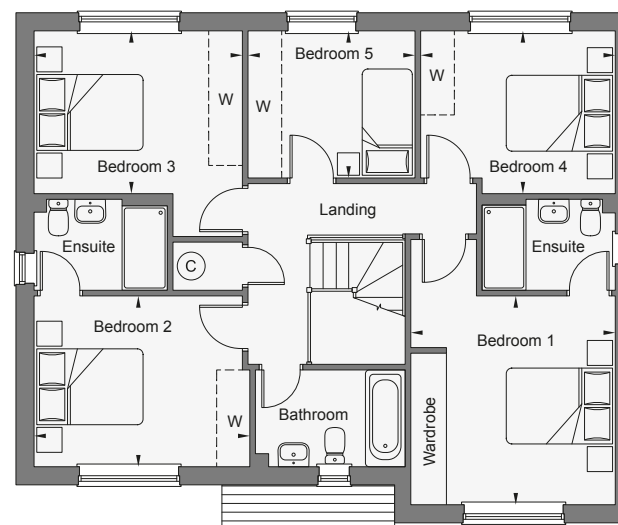
Homes shown: Plots 16 & 57

Homes handed: Plots 58 & 60



Ground Floor

Kitchen	3.66m x 3.58m	12'0" x 11'9"
Dining / Family	6.70m x 3.58m	22'0" x 11'9"
Living room	4.72m x 3.62m	15'6" x 11'11"
Study	2.75m x 2.07m	9'0" x 6'9"



First Floor

Bedroom 1	3.71m x 3.65m	12'2" x 12'0"
Bedroom 2	3.84m x 3.04m	12'7" x 10'0"
Bedroom 3	3.70m x 2.89m	12'1" x 9'6"
Bedroom 4	3.47m x 2.89m	11'5" x 9'6"
Bedroom 5	2.96m x 2.61m	9'9" x 8'7"

DISCLAIMER: *Tax window to plot 60 only. **Attached double garage available on plot 60 only with reduced size window to bedroom 2 ensuite. Chimney to plot 60 only. The information and images contained in this document are intended to convey the concept and vision for The Meadows development. They are for guidance only, may alter as work progresses and do not necessarily represent a true and accurate depiction of the finished product. Please speak with a Sales Consultant regarding parking and garage locations. This document does not form part of any contract, nor does it form any representation or warranty in relation to the Developer, its Employees, Agents or to The Meadows development or any of their related developments.